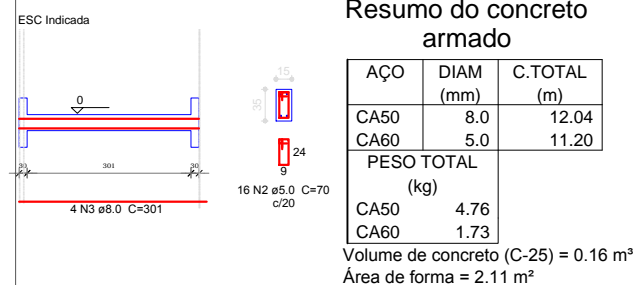
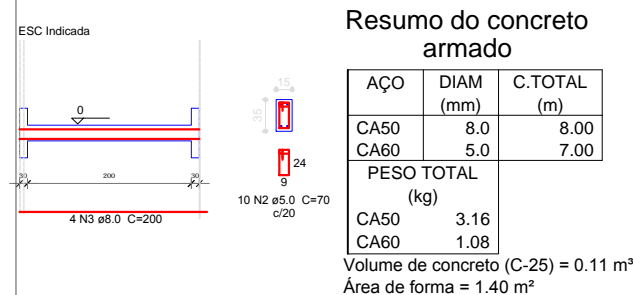


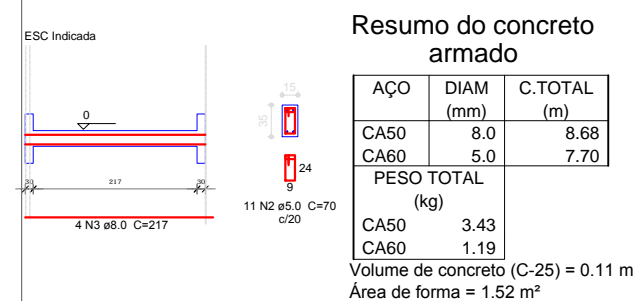
VB04



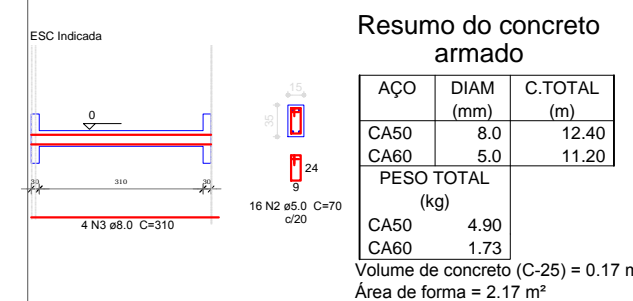
VB11



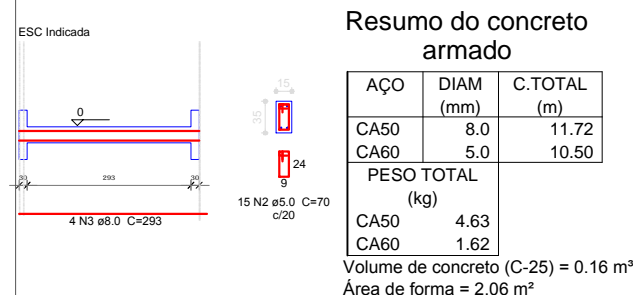
VB17



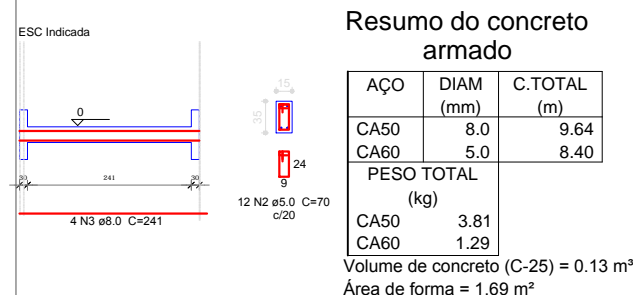
VB29 = VB30



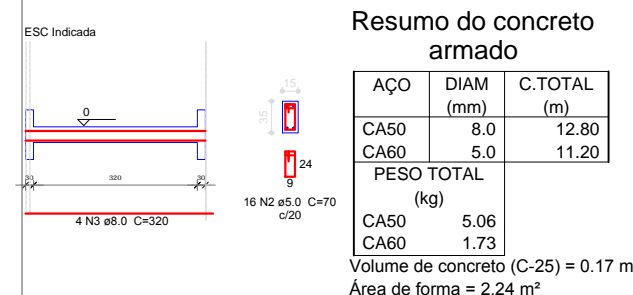
VB05 = VB06



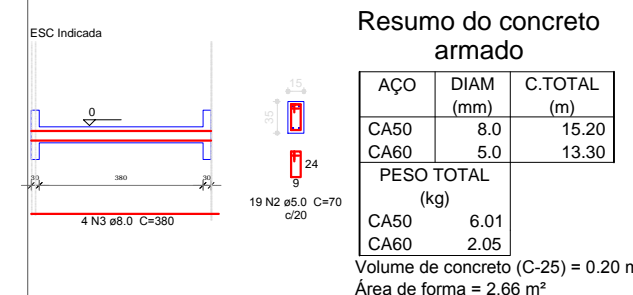
VB12



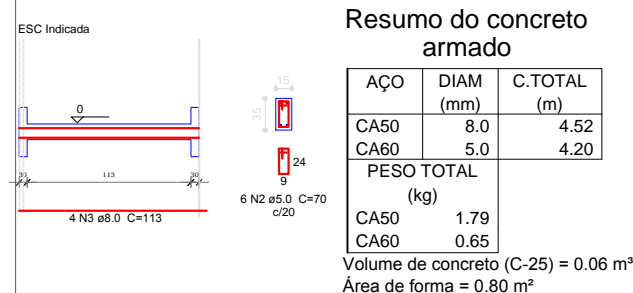
VB19



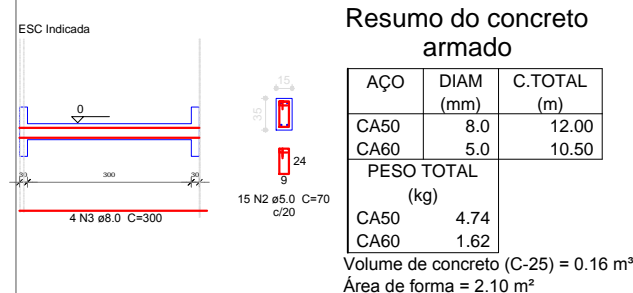
VB35



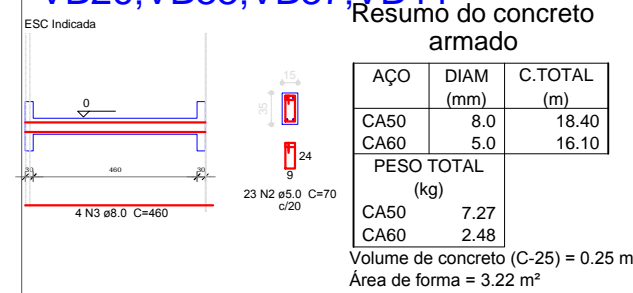
VB07



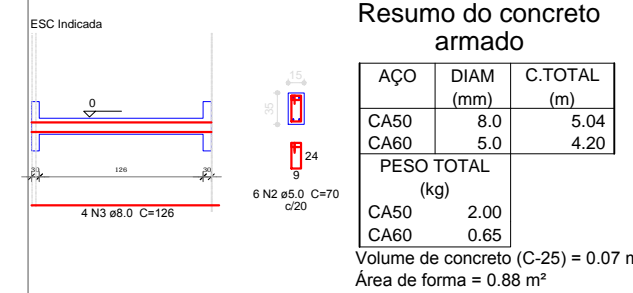
VB13=VB18



VB21=VB26;VB33;VB37;VB44



VB38 = VB42;VB49;



## DETALHAMENTO DE VIGAS SUPERIORES

Esc: sem



PREFEITURA MUNICIPAL DE  
**VÁRZEA GRANDE**  
*amar • cuidar • acreditar*

## PREFEITURA MUNICIPAL DE VÁRZEA GRANDE

Av. Castelo Branco, Espaço Municipal, 2500 - Centro Sul, Várzea Grande/MT  
CEP 78125-700 - Fone/Fax: 65 3688 8000

PROJETO:

**ABRIGO PARA IDOSOS**

LOCALIZAÇÃO:

**AVENIDA CASTELO BRANCO**

OBRA:

**CONSTRUÇÃO**

ASSUNTO:

**VIGAS SUPERIORES BLOCO B**

AUTOR DO PROJETO:

**AUREO EMANOEL DA SILVA**  
ENGNEHEIRO CIVIL  
CREA-MT042435

UNIDADE:

**METRO**

ESCALA:

**Indicada**

DATA:

**julho/2019**

FOLHA N°

**10/11**